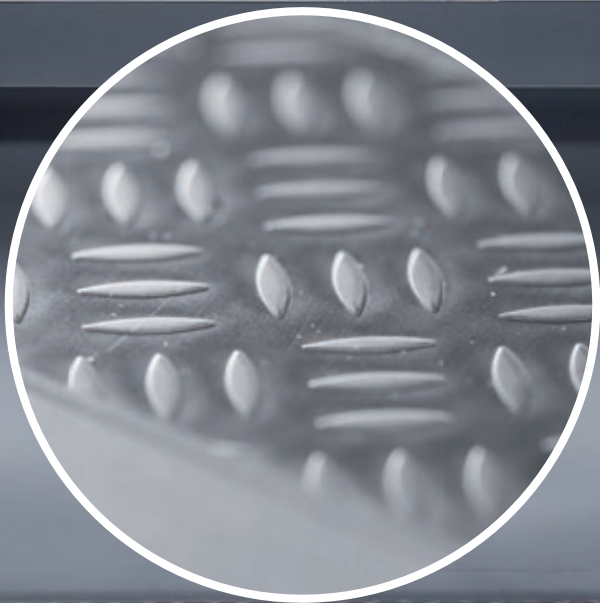




■ FINALLY, AN
ALTERNATIVE...



The Alternative...

SE-TB1 offers you an excellent alternative to the already well-known aluminium plate "duet and quintet", as well as the stainless steel chequer plate. Either as a slip-resistant bottom plate with low rolling resistance or as elegant wall cladding, the SE-TB1 can be used for a wide variety of areas.

The advantages of the SE-TB1 are clear. Even thin bottom plates with a lower weight are extremely resilient.

Due to our modern cut-to-length systems, we can deliver fixed lengths or sheet material from the coil within a very short time.

... to stainless steel chequer plates:

- Less rolling resistance
- Thicknesses from 0.50 to 4.00 mm
- Environmentally friendly
- Anti-slip surface possible from the coil
- Smaller edge radii - better processing options
- Less effort in welding

... to aluminium:

- More design options with the surface
- A greater variety of materials
- More corrosion resistant
- No coating required
- Longer lasting
- Higher load capacity with less strength
- Hygienic, better to clean

Formats	Strengths	W No.	Surface areas
2500 x 1250 mm 3000 x 1250 mm 3000 x 1500 mm Coil 1250/1500 mm Fixed lengths	0.8-4.0 mm	• 1.4301 • 1.4404	Certified Slip resistance • R11 from the coil • R12 / R13 • el-pol & colour possible

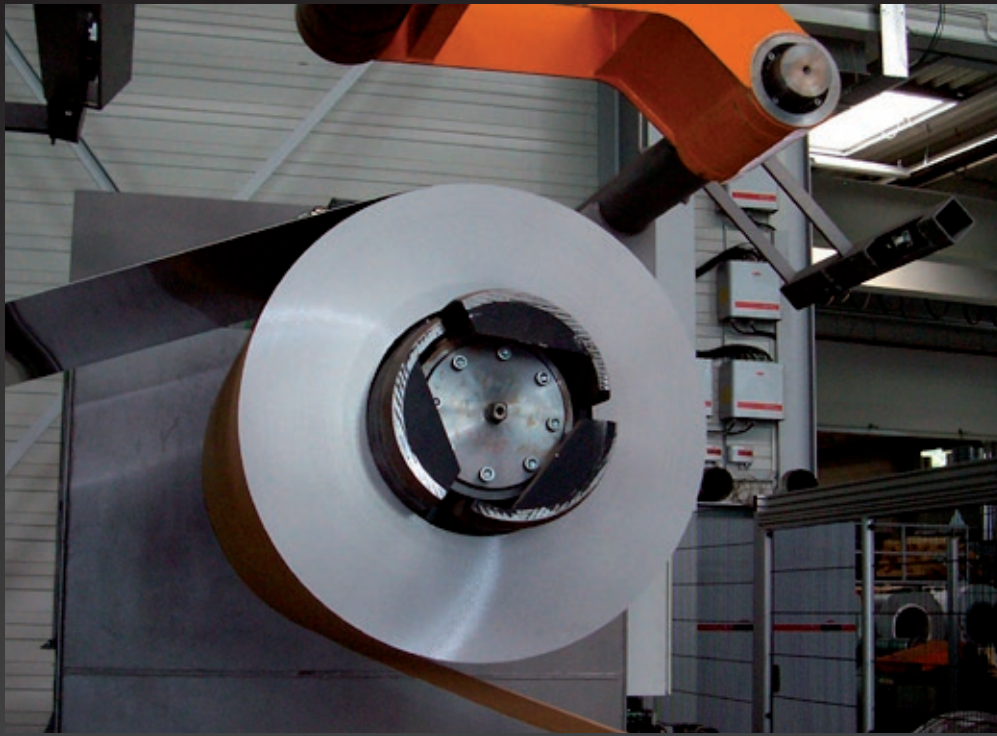
Other surfaces and formats on request.

SE-TB1 (R11)

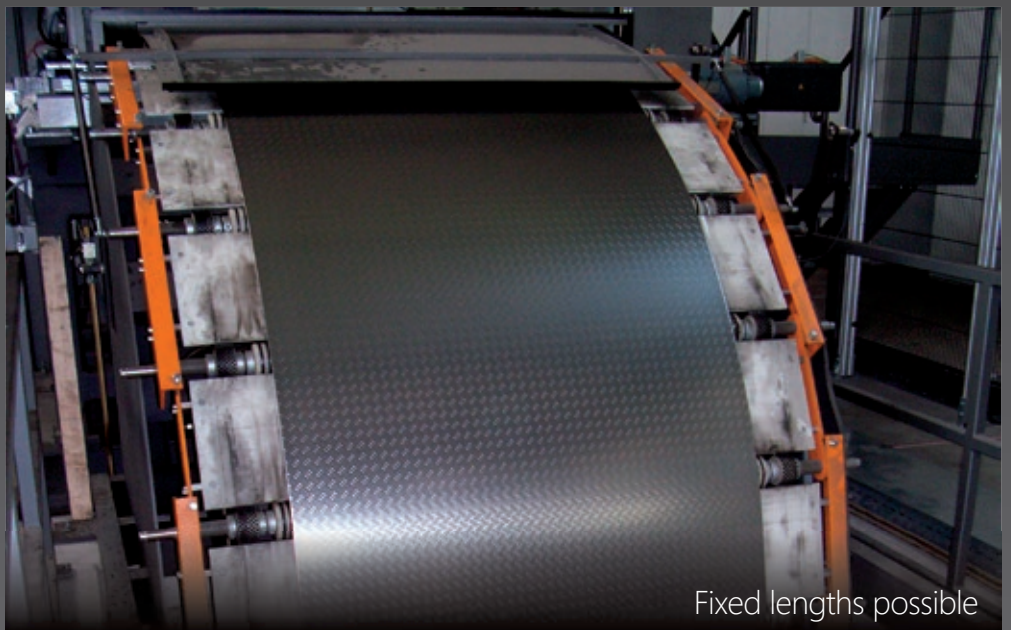
SE-TB1 604 (R12)

SE-TB1 636 (R13)

Special suitability for: <ul style="list-style-type: none"> • Industrial floors • Staircases • Swimming pools • Machine housing 	<ul style="list-style-type: none"> • Wall covering • Trade fair construction • Refrigerator floors • Railway stations & airports 	Advantages due to: <ul style="list-style-type: none"> • Slip-resistant surface (German certificate) • Higher stability and stiffness compared to smooth sheets • Lower rolling resistance • Saving of weight through lower material thickness • Less wear and tear
--	--	--



Certified slip resistance R11-R13



Fixed lengths possible



